



DCE 3

7. Cahier de coupes types des mares

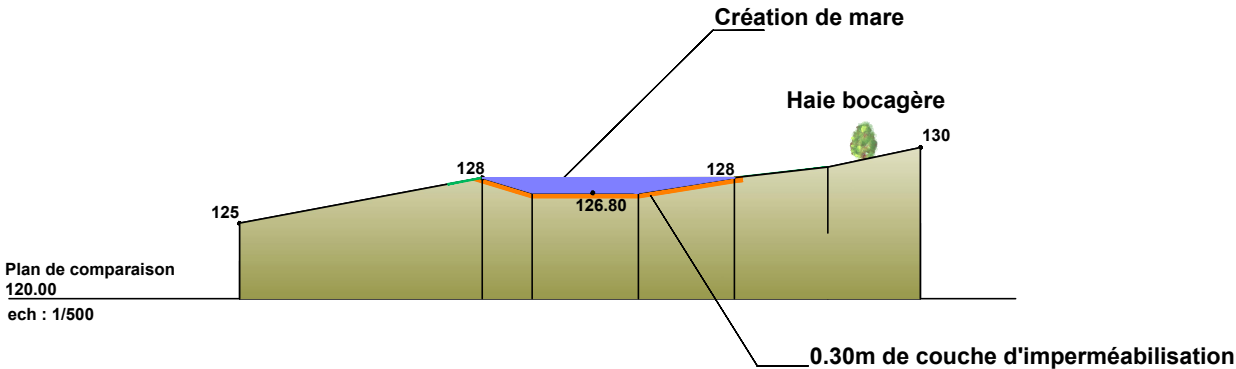
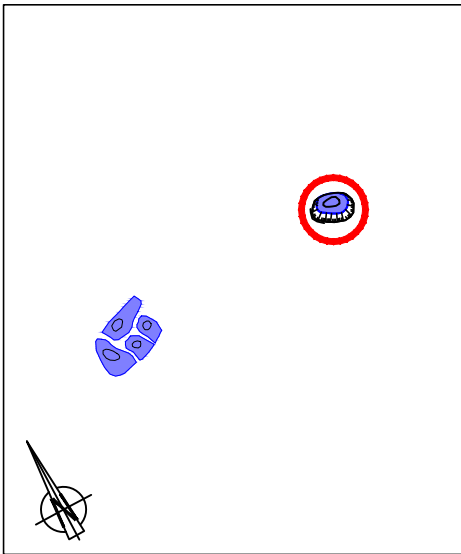
Indice	Date	Sommaire des modifications	Rédaction	Vérification	Approbation
A	28/02/2025	Edition du document	CMX	PSN	EBD

Emetteur	Mission	Thème	Type	Ouvrage	Numéro	Indice
ING	DCE 3	ENV	PL	N147	3526	A

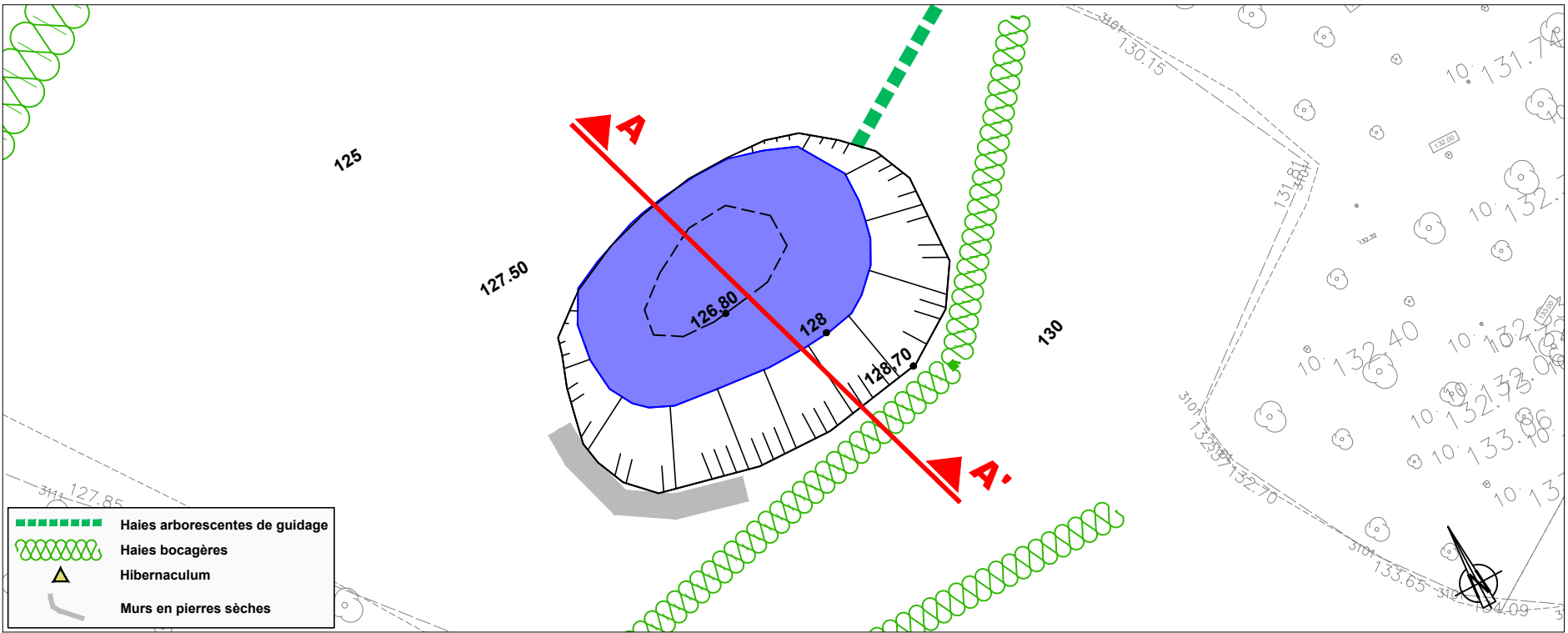
Echelles (s) :

COUPE TRANSVERSALE AU DROIT DE LA MARE NORD-EST
Puits de châtaignier

Coupe A-A'

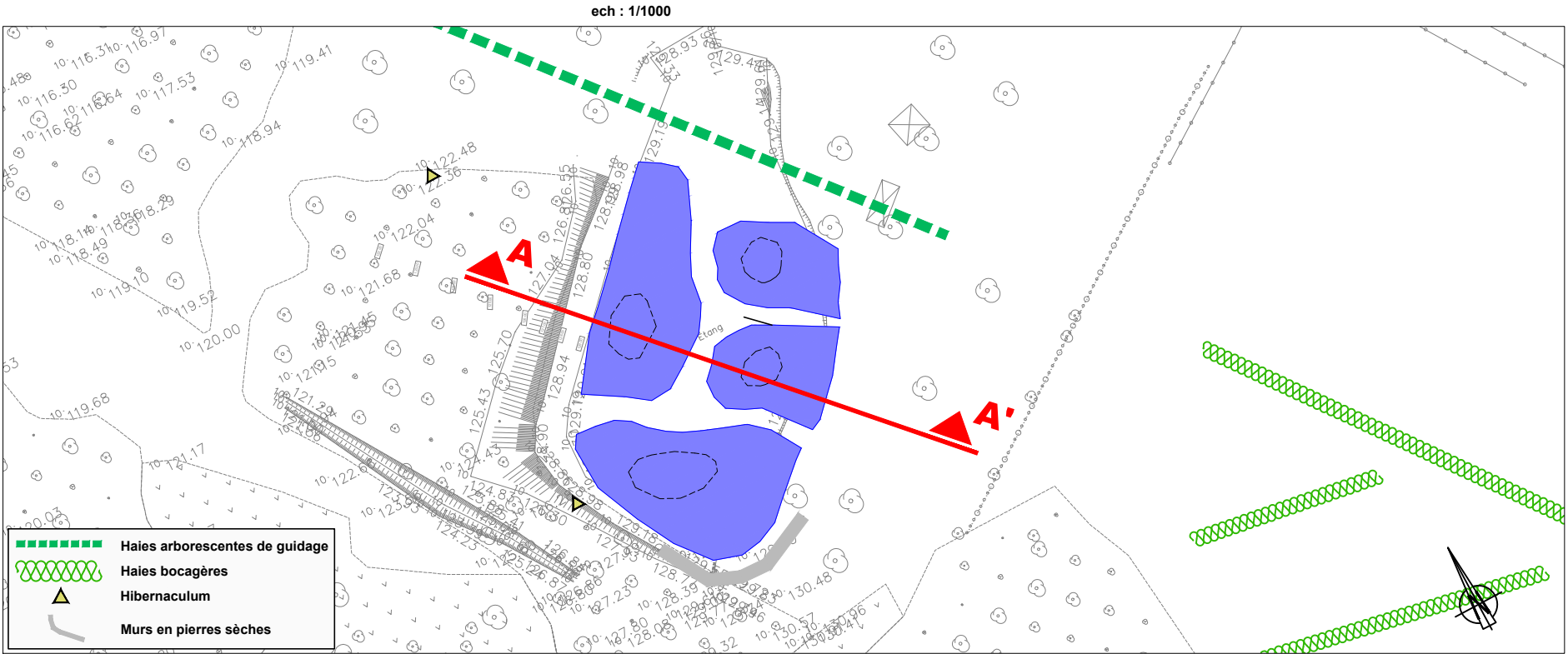
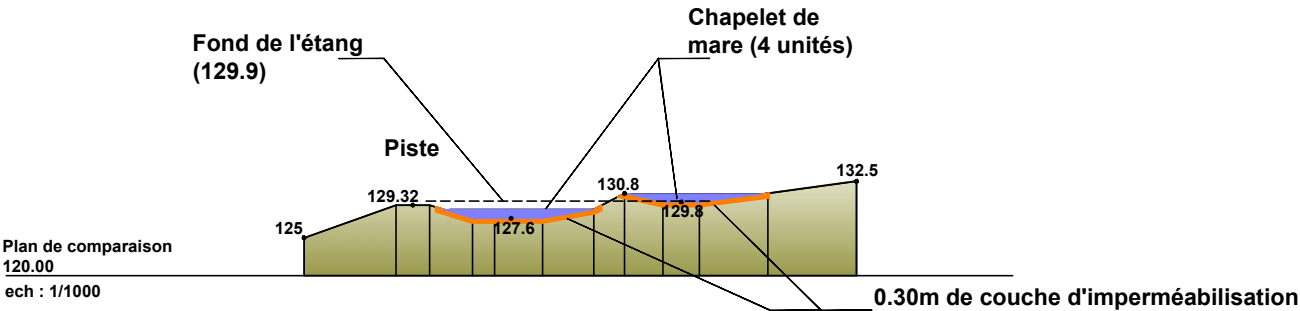
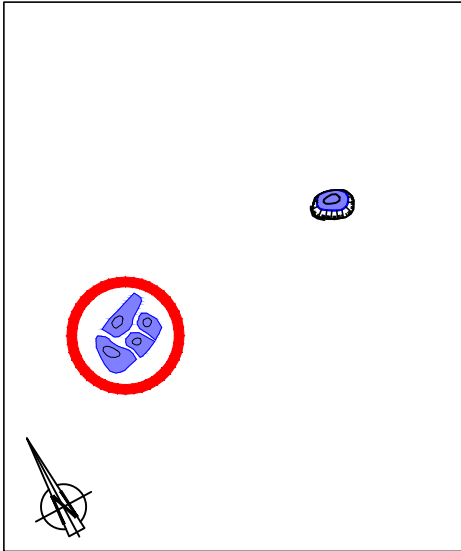


ech : 1/500



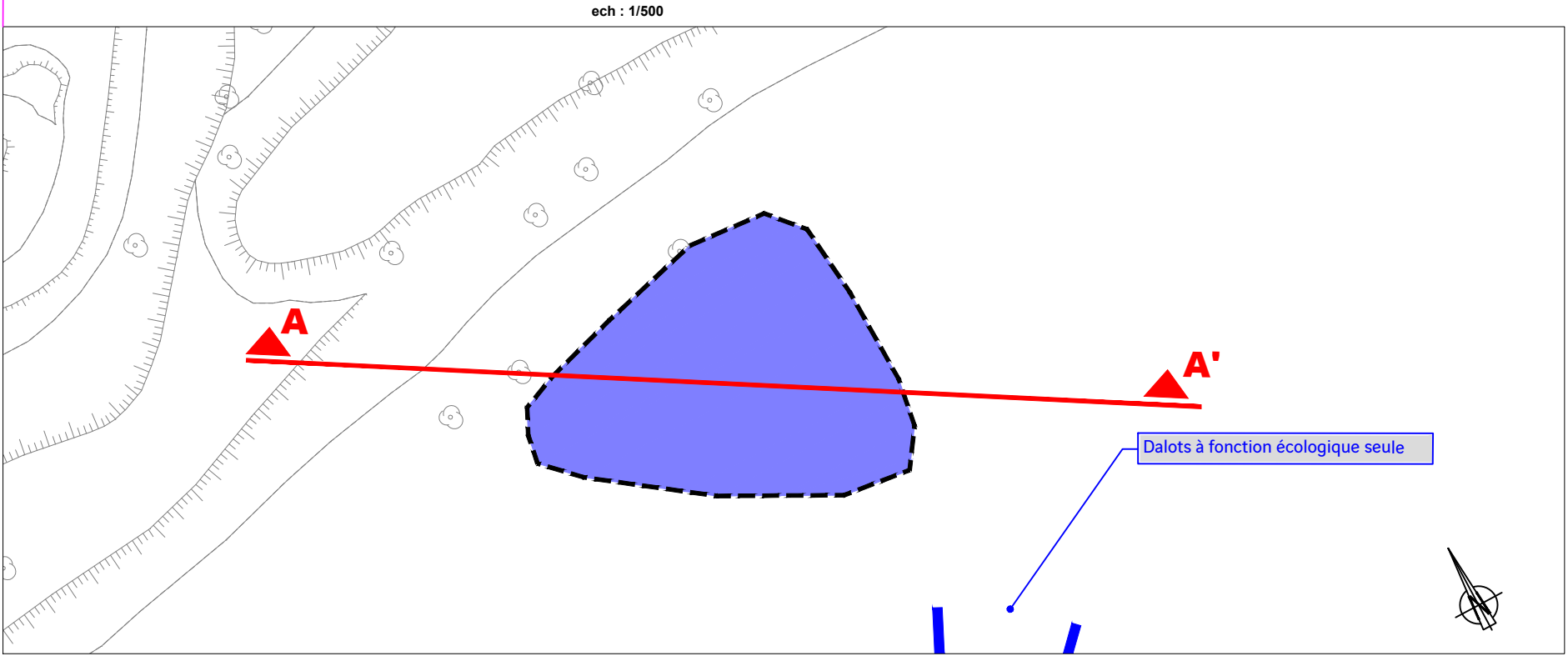
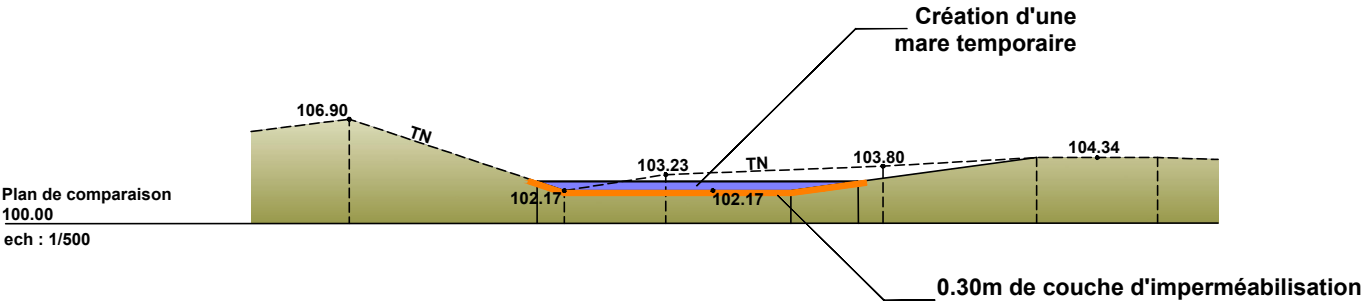
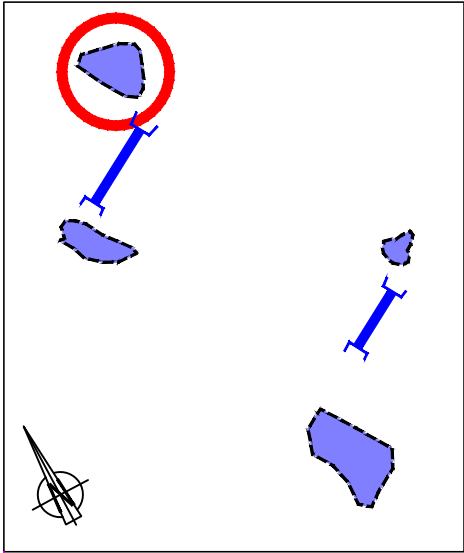
COUPE TRANSVERSALE AU DROIT DU CHAPELET SUD-OUEST
Renaturation de l'étang - Puits de châtaignier

Coupe A-A'



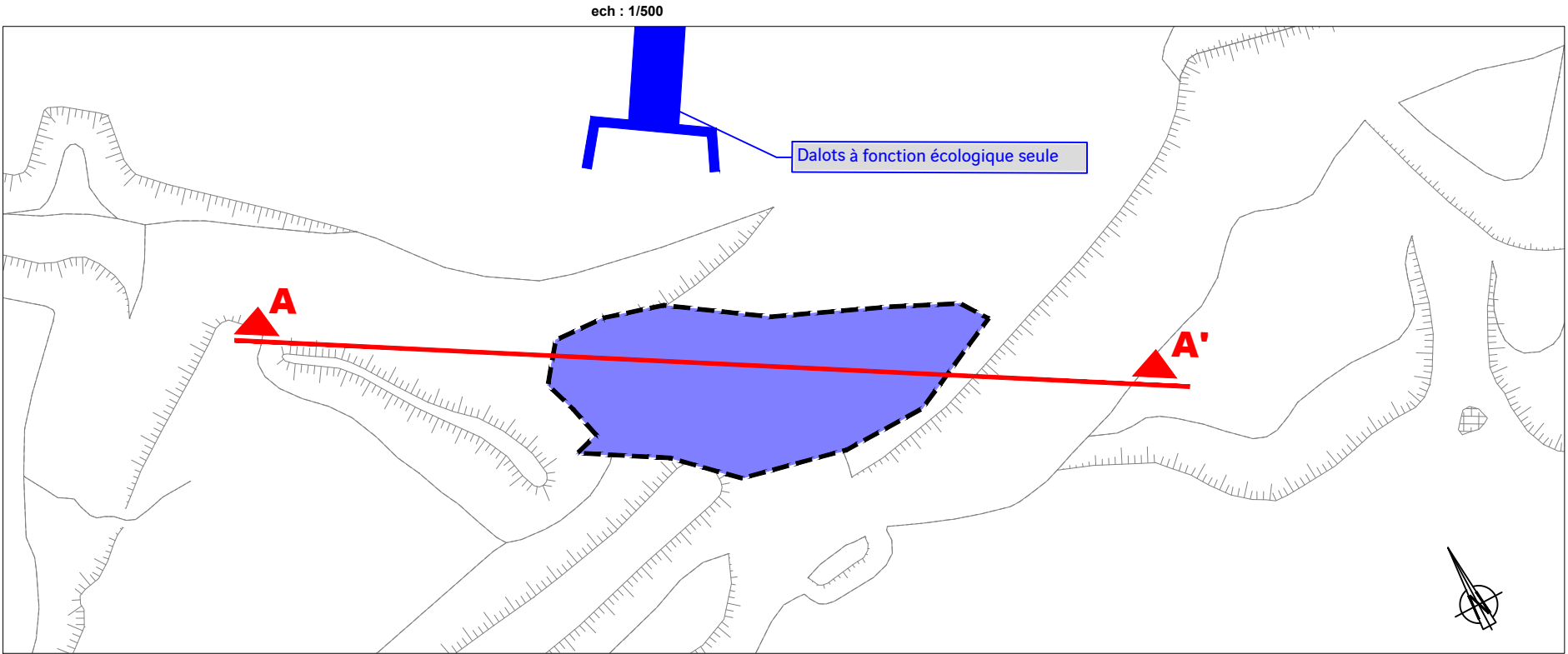
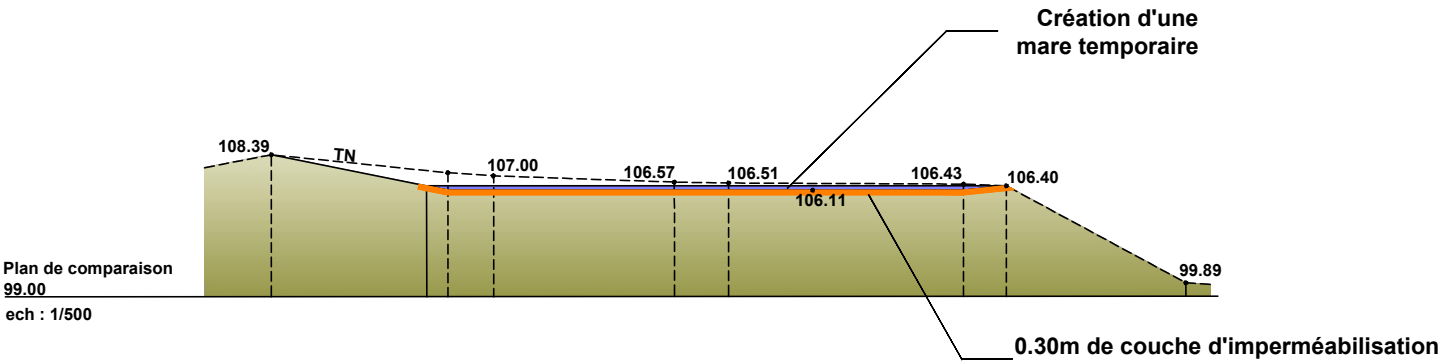
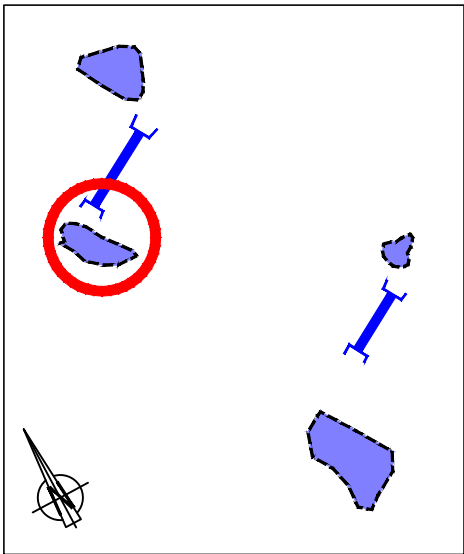
COUPE TRANSVERSALE AU DROIT DES CARRIERES
Mare temporaire nord-ouest

Coupe A-A'



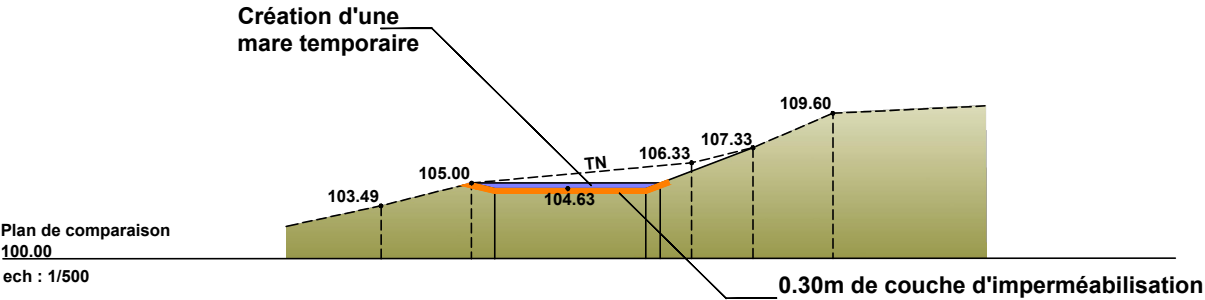
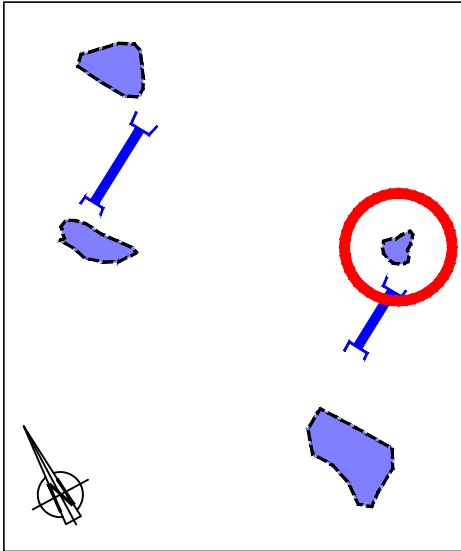
COUPE TRANSVERSALE AU DROIT DES CARRIERES
Mare temporaire sud-ouest

Coupe A-A'

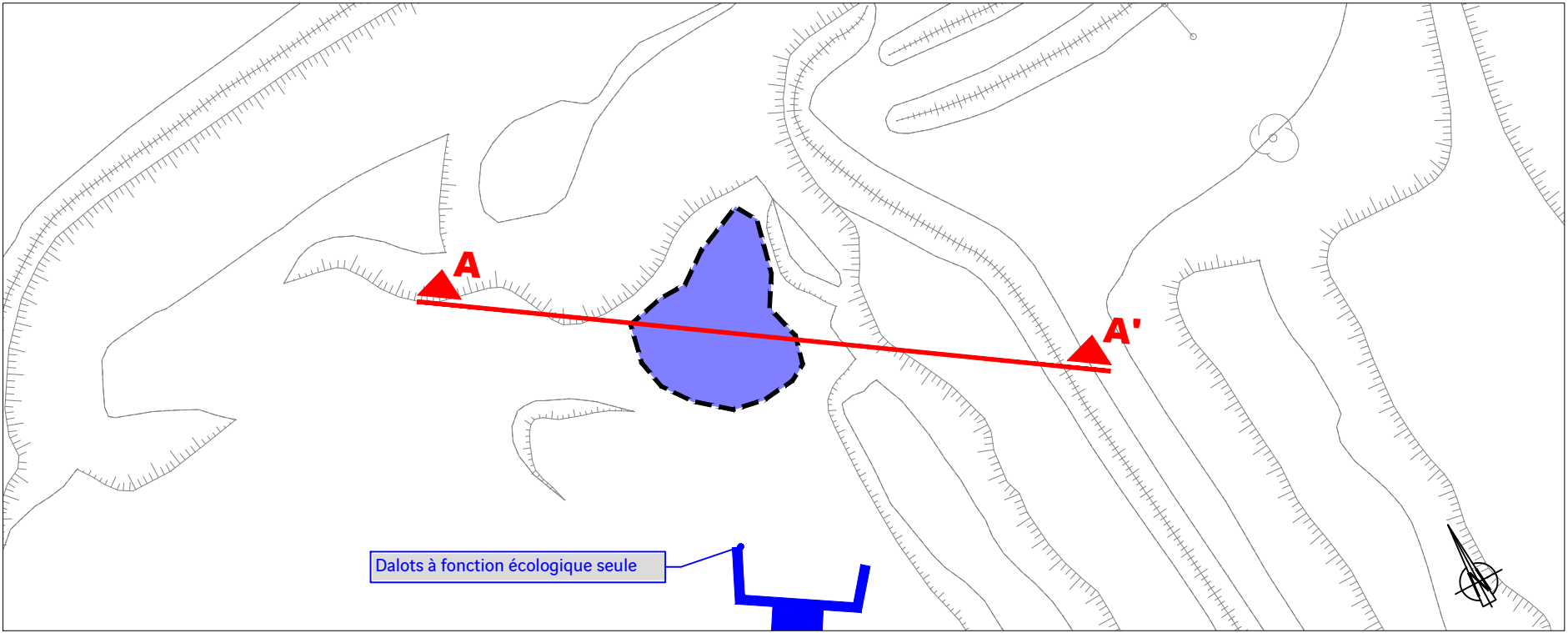


COUPE TRANSVERSALE AU DROIT DES CARRIERES
Mare temporaire nord-est

Coupe A-A'



ech : 1/500



COUPE TRANSVERSALE AU DROIT DES CARRIERES
Mare temporaire sud-est

Coupe A-A'

